



**VIRIYA GREEN**  
Pool Villas

## THE PROJECT CONCEPT

A home surrounded by nature is the best place to relax. Avoid the hustle and bustle of the city Breathe in fresh air and abundant nature in a location near the Khao Phra Thaew forest area. Surrounded by trees and a stream behind the project. With a variety of activities such as bird watching, walking, enjoying nature and exercising. Makes you feel completely free and relaxed.



## PROJECT INFORMATIONS

Project name : Viriya Green  
Developer : Viriya Property and Development Co.,Ltd.  
Total Land area : 15,017.60 sq.m  
Number of Units : 21 Unit  
Title : freehold/lease hold  
Villa type : 3-5 bedroom pool villa  
Plot size : 360.00 - 748.85 sqm  
Construction size : 253.00 - 503.99 sqm  
Facility & Service : 24hour Security / 24 hour CCTV /  
villa services / water filtration system/villa rental  
management  
Construction term : 2024





VIRIYA GREEN

Exterior Perspective

These photographs are intended as promotional material only





**VIRIYA GREEN**  
**Exterior Perspective**

These photographs are intended as promotional material only





**VIRIYA GREEN**  
**Exterior Perspective**

These photographs are intended as promotional material only





Interior Perspective  
Dining-Kitchen

These photographs are intended as promotional material only



VIRIYA GREEN





Interior Perspective  
Living

These photographs are intended as promotional material only



VIRIYA GREEN





VIRIYA GREEN

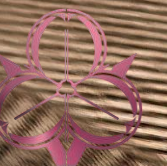
Interior Perspective  
Bedroom





## Interior Perspective Bedroom

These photographs are intended as promotional material only



VIRIYA GREEN





Interior Perspective  
Bath room

These photographs are intended as promotional material only



VIRIYA GREEN



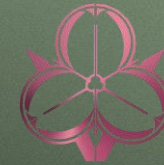


VIRIYA GREEN

## CONCEPT DESIGN

The concept of architectural design under "Tropical Modern Architecture" is built amid nature. Materials such as wood, brick, and ceiling tilted along the roof make the room look wider than usual. get more usable space and design the overhanging eaves for shade and ventilation There is a design layout for the use of the house. Home use is simple, easy to use, and without the complexity of space.





VIRIYA GREEN

PRESENT 4 VILLA TYPES





# MASTER PLAN

THESE PHOTOGRAPHS ARE INTENDED AS PROMOTIONAL MATERIAL ONLY



## VIRIYA GREEN

- Main Entrance
- Security Office
- Security Gate
- Service

### TYPE A : A4

Built up area : 447.88 sq.m  
land area : 569.40 sq.m

### TYPE A : A5

Built up area : 447.88 sq.m  
land area : 552.00 sq.m

### TYPE A : A6

Built up area : 447.88 sq.m  
land area : 552.00 sq.m

### TYPE B : B1

Built up area : 351.88 sq.m  
land area : 556.20 sq.m

**TYPE A : A1**  
Built up area : 447.88 sq.m  
land area : 570.43 sq.m

**TYPE A : A2**  
Built up area : 447.88 sq.m  
land area : 556.89 sq.m

**TYPE A : A3**  
Built up area : 447.88 sq.m  
land area : 625.88 sq.m

**TYPE C : C1**  
Built up area : 324.55 sq.m  
land area : 554.59 sq.m

**TYPE C : C2**  
Built up area : 324.55 sq.m  
land area : 573.46 sq.m

**TYPE O : 01**  
Built up area : 253.00 sq.m  
land area : 421.63 sq.m

**TYPE O : 02**  
Built up area : 253.00 sq.m  
land area : 360.00 sq.m

**TYPE O : 04**  
Built up area : 253.00 sq.m  
land area : 360.00 sq.m

**TYPE O : 05**  
Built up area : 253.00 sq.m  
land area : 361.49 sq.m

**TYPE B : B2**  
Built up area : 447.88 sq.m  
land area : 704.09 sq.m

**TYPE C : C4**  
Built up area : 324.55 sq.m  
land area : 570.89 sq.m

**TYPE C : C3**  
Built up area : 324.55 sq.m  
land area : 549.88 sq.m

**TYPE D : D1**  
Built up area : 503.99 sq.m  
land area : 748.85 sq.m

### TYPE 06S : Special

Built up area : 301.00 sq.m  
land area : 600.63 sq.m

### TYPE C : C5

Built up area : 324.55 sq.m  
land area : 591.50 sq.m

### TYPE A : A7

Built up area : 447.88 sq.m  
land area : 674.83 sq.m







VIRIYA GREEN

PRESENT VILLA TYPES : A1-A7





VIRIYA GREEN

## TYPE : A1-A6

5 Bedroom Villas

Total built-up area 447.88 m<sup>2</sup>

### Area Information

#### Ground Floor Plan

|                       |                      |
|-----------------------|----------------------|
| Living,Kitchen,Dining | 61.30 m <sup>2</sup> |
| Master Bedroom.1      | 28.00 m <sup>2</sup> |
| Master Bathroom.1     | 12.50 m <sup>2</sup> |
| Bedroom.2             | 19.50 m <sup>2</sup> |
| Bathroom.2            | 6.00 m <sup>2</sup>  |
| Bedroom.3             | 19.50 m <sup>2</sup> |
| Bathroom.3            | 4.50 m <sup>2</sup>  |
| Bedroom.4             | 16.28 m <sup>2</sup> |
| Bathroom.4            | 3.70 m <sup>2</sup>  |
| Pump Room,Stairs      | 6.80 m <sup>2</sup>  |
| BBQ.                  | 24.00 m <sup>2</sup> |
| Main Entrance         | 9.50 m <sup>2</sup>  |
| Garage,Storage        | 39.50 m <sup>2</sup> |
| Dining Terrace        | 17.60 m <sup>2</sup> |
| Bedroom.4 Terrace     | 4.65 m <sup>2</sup>  |
| Pool Terrace          | 45.00 m <sup>2</sup> |
| Outdoor Shower        | 1.60 m <sup>2</sup>  |
| Swimming Pool         | 62.60 m <sup>2</sup> |

Total Internal Area 251.08 m<sup>2</sup>

Total External Area 131.45 m<sup>2</sup>

**Ground Floor Plan 382.53 m<sup>2</sup>**







VIRIYA GREEN

# TYPE : A1-A6

5 Bedroom Villas

Total built-up area 447.88 m<sup>2</sup>

## Area Information Second Floor Plan

|                   |                      |
|-------------------|----------------------|
| Bedroom.5         | 21.60 m <sup>2</sup> |
| Bathroom.5        | 13.25 m <sup>2</sup> |
| Bedroom.5 Terrace | 30.50 m <sup>2</sup> |

|                          |                            |
|--------------------------|----------------------------|
| Total Internal Area      | 34.85 m <sup>2</sup>       |
| Total External Area      | 30.50 m <sup>2</sup>       |
| <b>Second Floor Plan</b> | <b>65.35 m<sup>2</sup></b> |



These photographs are intended as promotional material only





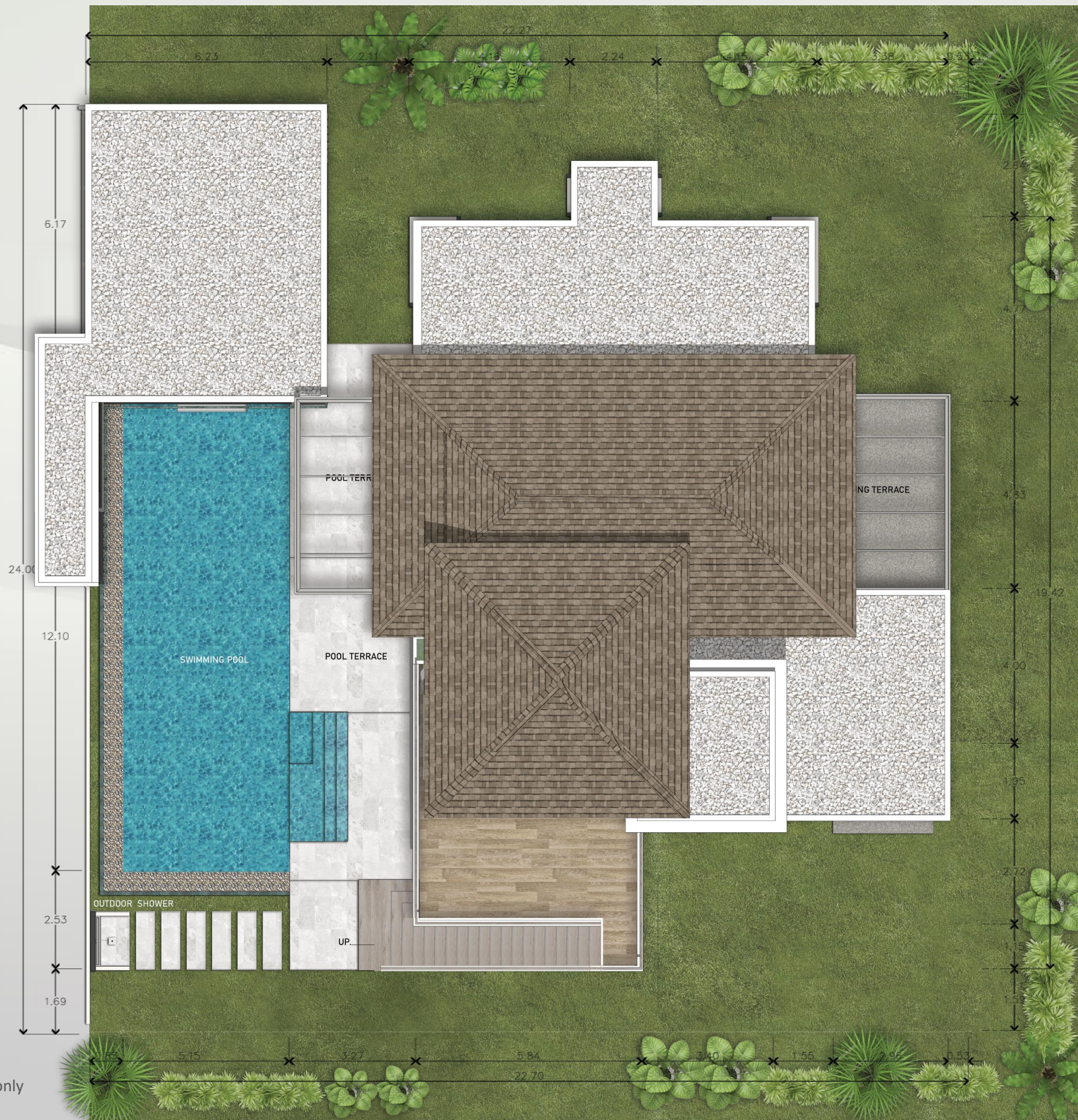
VIRIYA GREEN

# TYPE : A1-A6

5 Bedroom Villas

Total built-up area 447.88 m<sup>2</sup>

Roof Plan



These photographs are intended as promotional material only





VIRIYA GREEN

PRESENT VILLA TYPES : B1-B2







VIRIYA GREEN

# TYPE : B1

4 Bedroom Villas

## Area Information Ground Floor Plan

|                            |                             |
|----------------------------|-----------------------------|
| Living,Kitchen,Dining      | 61.30 m <sup>2</sup>        |
| Master Bedroom.1           | 28.00 m <sup>2</sup>        |
| Master Bathroom.1          | 12.50 m <sup>2</sup>        |
| Bedroom.2                  | 19.50 m <sup>2</sup>        |
| Bathroom.2                 | 6.00 m <sup>2</sup>         |
| Bedroom.3                  | 19.50 m <sup>2</sup>        |
| Bathroom.3                 | 4.50 m <sup>2</sup>         |
| Bedroom.4                  | 16.28 m <sup>2</sup>        |
| Bathroom.4                 | 3.70 m <sup>2</sup>         |
| Main Entrance              | 9.50 m <sup>2</sup>         |
| Garage,Storage             | 39.50 m <sup>2</sup>        |
| Dining Terrace             | 17.60 m <sup>2</sup>        |
| Bedroom.4 Terrace          | 4.65 m <sup>2</sup>         |
| Pool Terrace               | 47.52 m <sup>2</sup>        |
| Outdoor Shower             | 1.60 m <sup>2</sup>         |
| Pavilion                   | 13.35m <sup>2</sup>         |
| Swimming Pool              | 46.88 m <sup>2</sup>        |
| <b>Total Internal Area</b> | <b>220.28 m<sup>2</sup></b> |
| <b>Total External Area</b> | <b>131.60 m<sup>2</sup></b> |
| <b>Total built-up area</b> | <b>351.88 m<sup>2</sup></b> |







VIRIYA GREEN

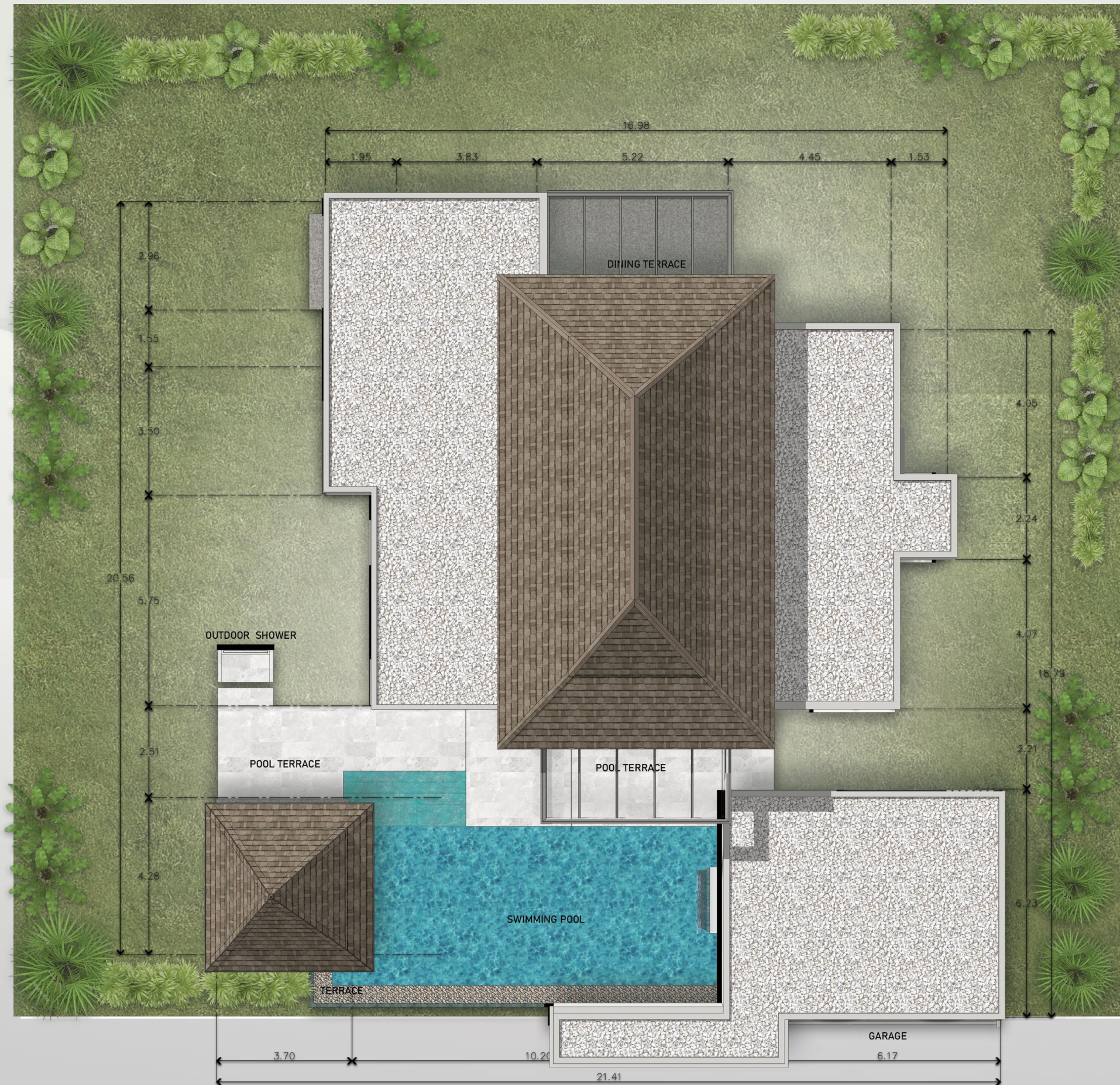
**TYPE : B1**

4 Bedroom Villas

**Roof Plan**

Total built-up area

**351.88 m<sup>2</sup>**



These photographs are intended as promotional material only





VIRIYA GREEN

PRESENT VILLA TYPES : C1-C4





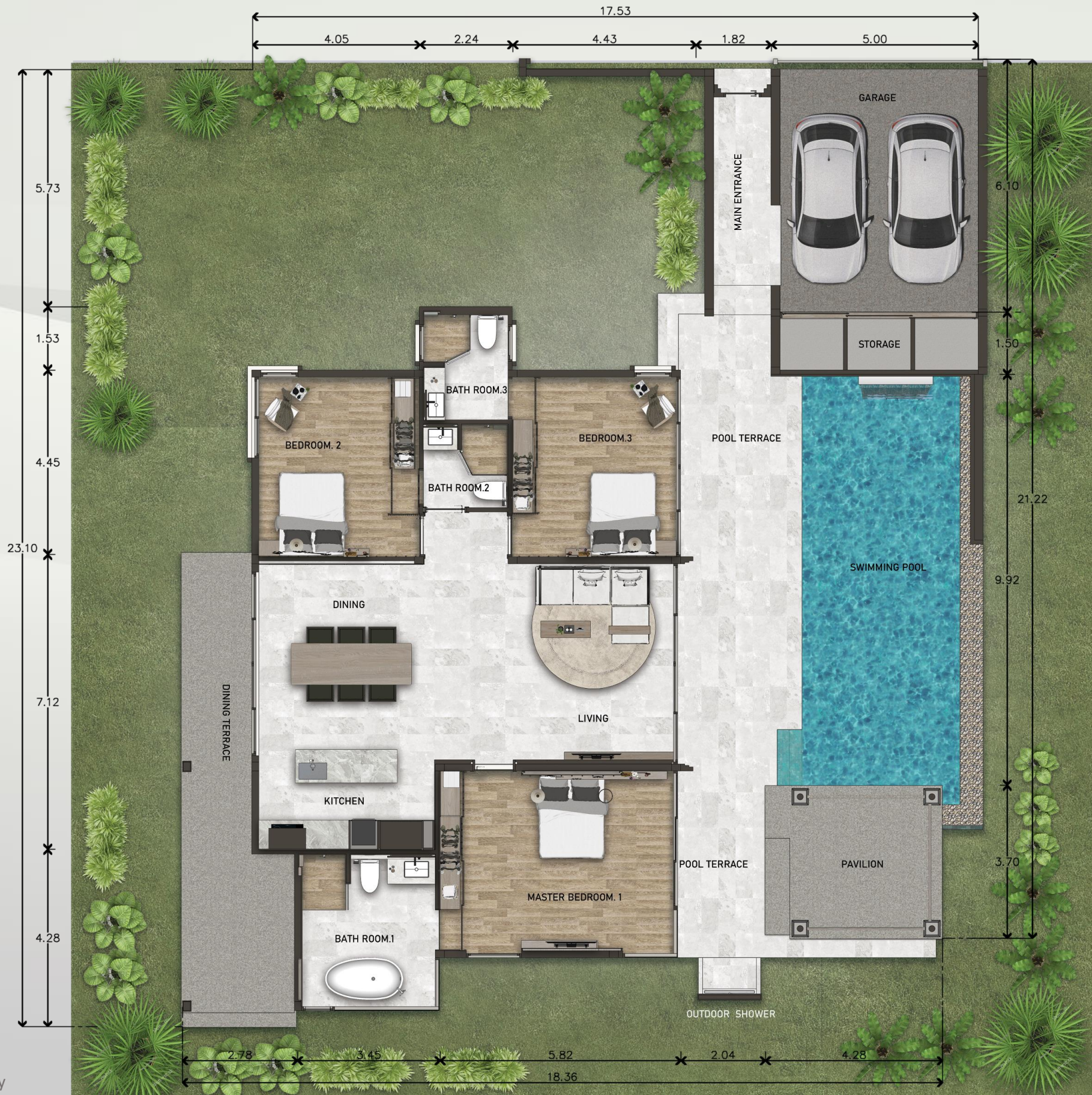
VIRIYA GREEN

# TYPE : C1-C4

3 Bedroom Villas

## Area Information Ground Floor Plan

|                            |                             |
|----------------------------|-----------------------------|
| Living,Kitchen,Dining      | 61.30 m <sup>2</sup>        |
| Master Bedroom.1           | 28.00 m <sup>2</sup>        |
| Master Bathroom.1          | 12.50 m <sup>2</sup>        |
| Bedroom.2                  | 19.50 m <sup>2</sup>        |
| Bathroom.2                 | 6.00 m <sup>2</sup>         |
| Bedroom.3                  | 19.50 m <sup>2</sup>        |
| Bathroom.3                 | 4.50 m <sup>2</sup>         |
| Pavilion                   | 13.35 m <sup>2</sup>        |
| Main Entrance              | 14.00 m <sup>2</sup>        |
| Garage,Storage             | 39.50 m <sup>2</sup>        |
| Dining Terrace             | 24.00 m <sup>2</sup>        |
| Pool Terracer              | 38.80 m <sup>2</sup>        |
| Outdoor Shower             | 1.60 m <sup>2</sup>         |
| Swimming Pool              | 42.00 m <sup>2</sup>        |
| <br>                       |                             |
| Total Internal Area        | 204.80 m <sup>2</sup>       |
| Total External Area        | 119.75 m <sup>2</sup>       |
| <b>Total built-up area</b> | <b>324.55 m<sup>2</sup></b> |







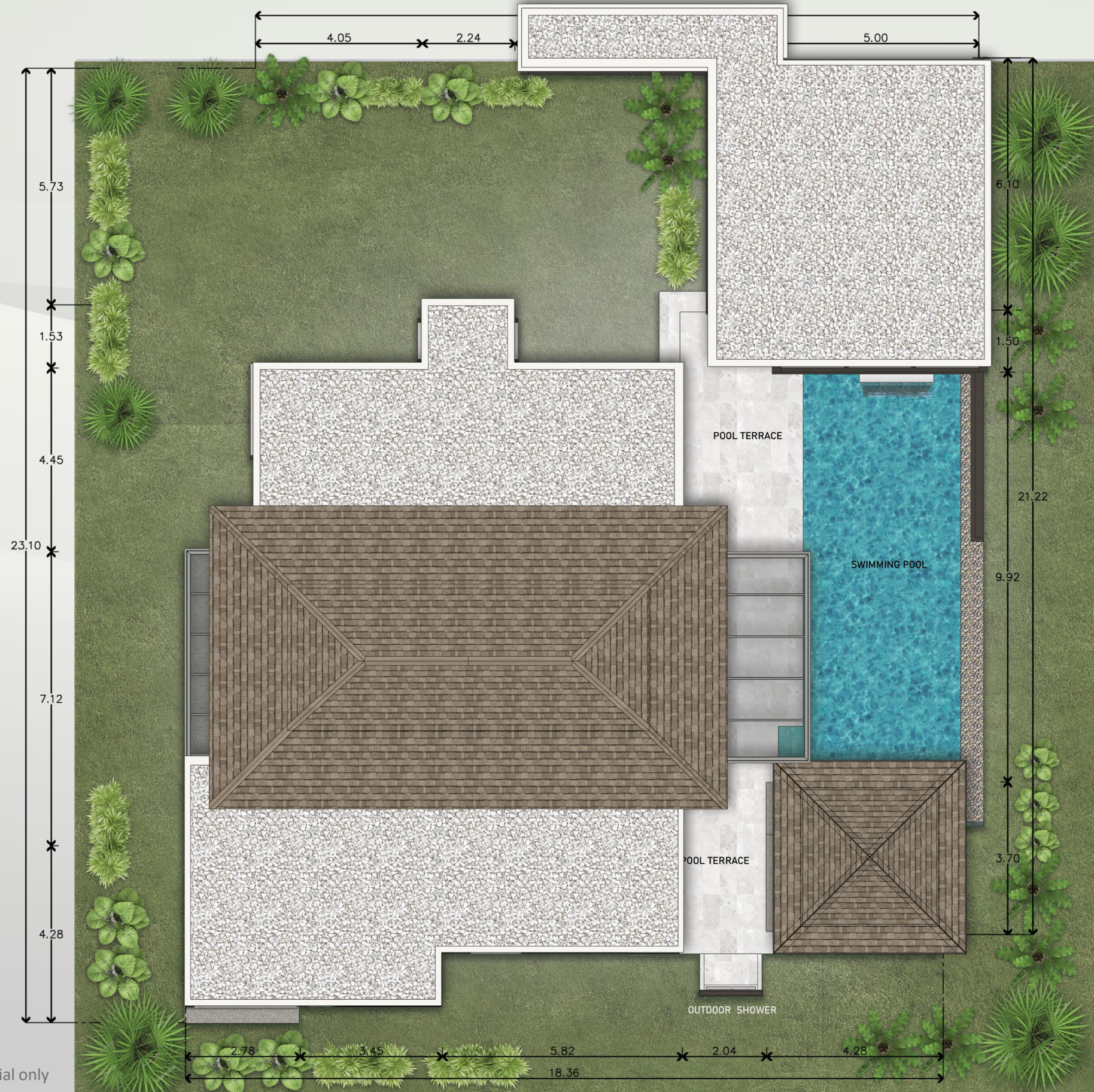
VIRIYA GREEN

# TYPE : C1-C4

3 Bedroom Villas

Total built-up area **324.55 m<sup>2</sup>**

## Roof Plan



These photographs are intended as promotional material only





VIRIYA GREEN

PRESENT VILLA TYPES : D1





VIRIYA GREEN

## TYPE : D1

5 Bedroom Villas

Total built-up area 503.99 m<sup>2</sup>

### Area Information

#### Ground Floor Plan

|                       |                      |
|-----------------------|----------------------|
| Living,Kitchen,Dining | 61.30 m <sup>2</sup> |
| Master Bedroom.1      | 28.00 m <sup>2</sup> |
| Master Bathroom.1     | 12.50 m <sup>2</sup> |
| Bedroom.2             | 19.50 m <sup>2</sup> |
| Bathroom.2            | 6.00 m <sup>2</sup>  |
| Bedroom.3             | 19.50 m <sup>2</sup> |
| Bathroom.3            | 4.50 m <sup>2</sup>  |
| Bedroom.4             | 16.28 m <sup>2</sup> |
| Bathroom.4            | 3.70 m <sup>2</sup>  |
| Pump Room,Stairs      | 6.80 m <sup>2</sup>  |
| BBQ.                  | 24.00 m <sup>2</sup> |
| Main Entrance         | 11.60 m <sup>2</sup> |
| Garage,Storage        | 48.60 m <sup>2</sup> |
| Dining Terrace        | 17.60 m <sup>2</sup> |
| Bedroom.4 Terrace     | 4.65 m <sup>2</sup>  |
| Pool Terrace          | 61.80 m <sup>2</sup> |
| Outdoor Shower        | 1.60 m <sup>2</sup>  |
| Swimming Pool         | 90.71 m <sup>2</sup> |

|                          |                             |
|--------------------------|-----------------------------|
| Total Internal Area      | 262.28 m <sup>2</sup>       |
| Total External Area      | 176.38 m <sup>2</sup>       |
| <b>Ground Floor Plan</b> | <b>438.64 m<sup>2</sup></b> |







VIRIYA GREEN

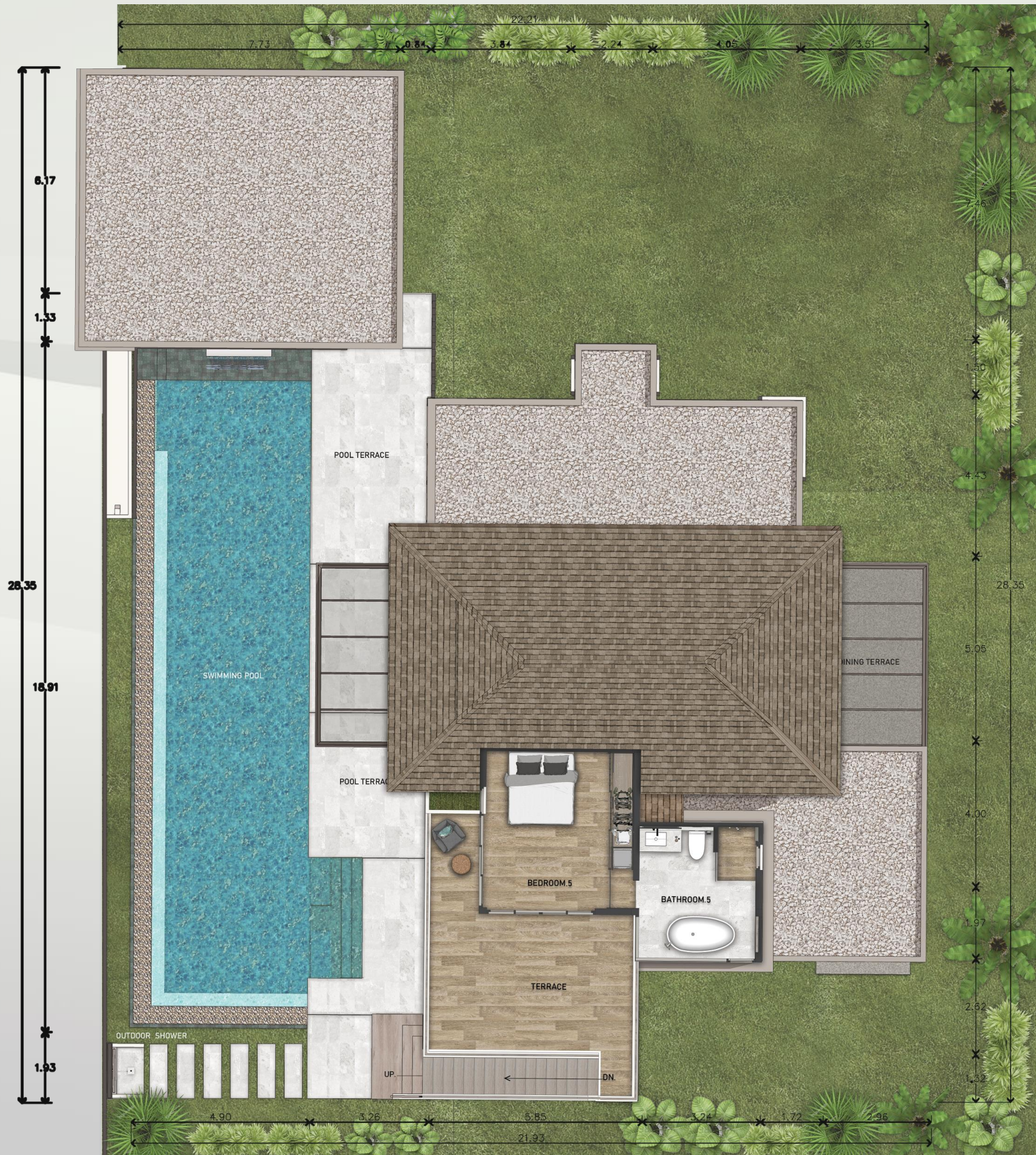
## TYPE : D1

5 Bedroom Villas

Total built-up area 503.99 m<sup>2</sup>

### Area Information Second Floor Plan

|                          |                            |
|--------------------------|----------------------------|
| Bedroom.5                | 21.60 m <sup>2</sup>       |
| Bathroom.5               | 13.25m <sup>2</sup>        |
| Bedroom.5 Terrace        | 30.50 m <sup>2</sup>       |
| Total Internal Area      | 34.85 m <sup>2</sup>       |
| Total External Area      | 30.50 m <sup>2</sup>       |
| <b>Second Floor Plan</b> | <b>65.35 m<sup>2</sup></b> |











VIRIYA GREEN

PRESENT VILLA TYPES : 01-05







VIRIYA GREEN

## TYPE : 01-05

3 Bedroom Villas

Total built-up area 253.00 m<sup>2</sup>

### Area Information Ground Floor Plan

|                       |                      |
|-----------------------|----------------------|
| Living,Kitchen,Dining | 52.00 m <sup>2</sup> |
| Master Bedroom.1      | 21.00 m <sup>2</sup> |
| Master Bathroom.1     | 9.50 m <sup>2</sup>  |
| Bedroom.2             | 15.00 m <sup>2</sup> |
| Bathroom.2            | 6.00 m <sup>2</sup>  |
| Bedroom.3             | 14.50 m <sup>2</sup> |
| Bathroom.3            | 6.00 m <sup>2</sup>  |
| Foyer                 | 9.00 m <sup>2</sup>  |
| Car Park              | 29.00 m <sup>2</sup> |
| Terrace               | 19.50 m <sup>2</sup> |
| Pump Room             | 2.50 m <sup>2</sup>  |
| Outdoor Shower        | 1.50 m <sup>2</sup>  |
| Pool deck             | 26.50 m <sup>2</sup> |
| Surge tank            | 3.00m <sup>2</sup>   |
| Swimming Pool         | 38.00 m <sup>2</sup> |

|                          |                             |
|--------------------------|-----------------------------|
| Total Internal Area      | 162.00 m <sup>2</sup>       |
| Total External Area      | 91.00 m <sup>2</sup>        |
| <b>Ground Floor Plan</b> | <b>253.00 m<sup>2</sup></b> |







VIRIYA GREEN

**TYPE : 01-05**

3 Bedroom Villas

Total built-up area 253.00 m<sup>2</sup>

**Roof Plan**







VIRIYA GREEN

PRESENT VILLA TYPES : 06-SPECIAL





VIRIYA GREEN

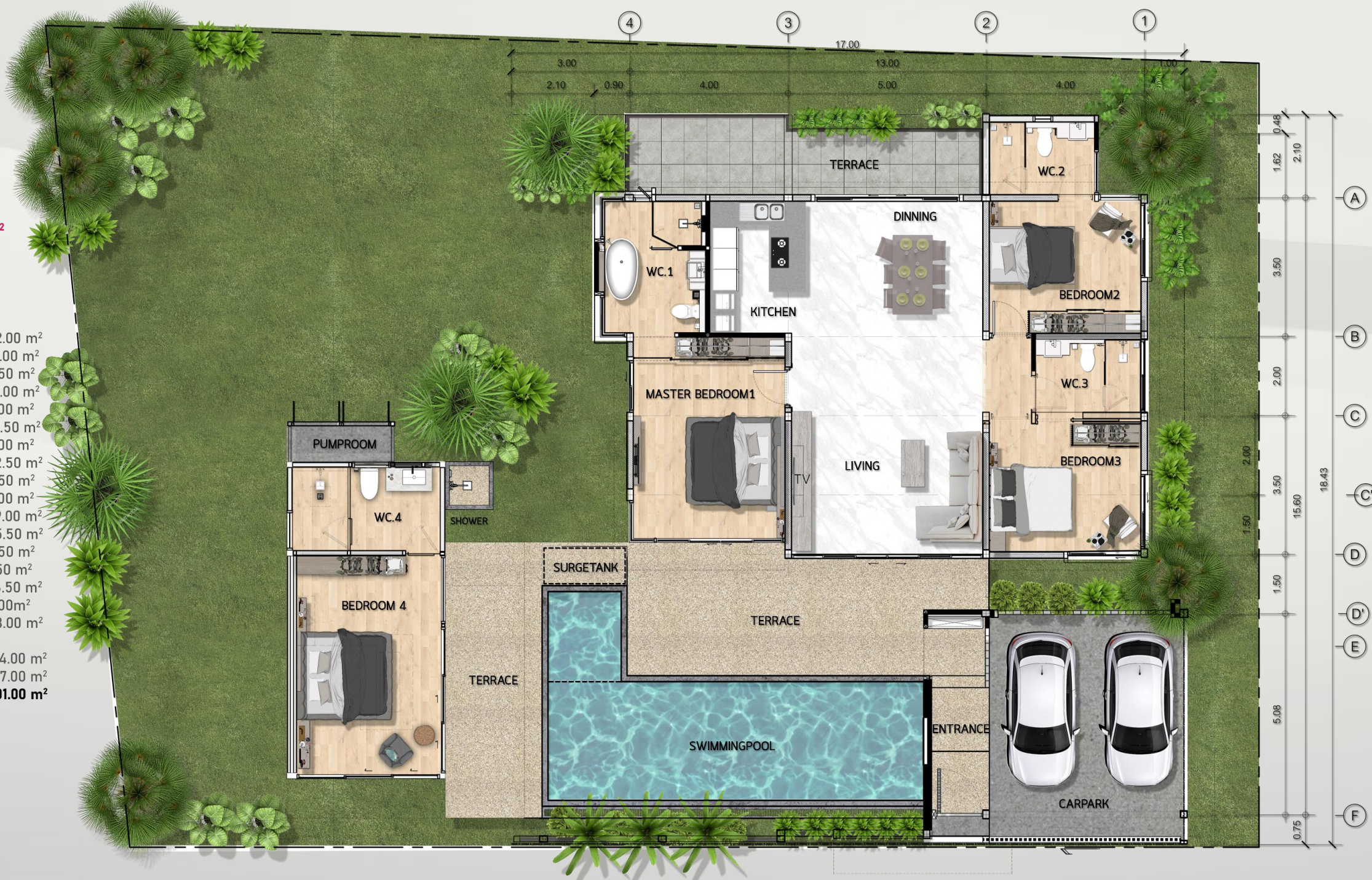
**TYPE : 06S**

4 Bedroom Villas

Total built-up area 301.00 m<sup>2</sup>

**Area Information  
Ground Floor Plan**

|                            |                             |
|----------------------------|-----------------------------|
| Living,Kitchen,Dining      | 52.00 m <sup>2</sup>        |
| Master Bedroom.1           | 21.00 m <sup>2</sup>        |
| Master Bathroom.1          | 9.50 m <sup>2</sup>         |
| Bedroom.2                  | 15.00 m <sup>2</sup>        |
| Bathroom.2                 | 6.00 m <sup>2</sup>         |
| Bedroom.3                  | 14.50 m <sup>2</sup>        |
| Bathroom.3                 | 6.00 m <sup>2</sup>         |
| Bedroom.4                  | 22.50 m <sup>2</sup>        |
| Bathroom.4                 | 9.50 m <sup>2</sup>         |
| Foyer                      | 9.00 m <sup>2</sup>         |
| Car Park                   | 29.00 m <sup>2</sup>        |
| Terrace                    | 35.50 m <sup>2</sup>        |
| Pump Room                  | 2.50 m <sup>2</sup>         |
| Outdoor Shower             | 1.50 m <sup>2</sup>         |
| Pool deck                  | 26.50 m <sup>2</sup>        |
| Surge tank                 | 3.00m <sup>2</sup>          |
| Swimming Pool              | 38.00 m <sup>2</sup>        |
| <b>Total Internal Area</b> | <b>194.00 m<sup>2</sup></b> |
| <b>Total External Area</b> | <b>107.00 m<sup>2</sup></b> |
| <b>Ground Floor Plan</b>   | <b>301.00 m<sup>2</sup></b> |







VIRIYA GREEN

**TYPE : 06S**

4 Bedroom Villas

Total built-up area 301.00 m<sup>2</sup>

Roof Plan







# CONVENIENT LOCATION

Affordable luxury place that you will enjoy Southeast Asian sunshine."it's Pool villas by viriya property and development "  
If relaxation is in order, you don't have to leave your house. "  
Thep krasattri Thalang , Phuket 83110



QR code  
Map Viriya Green



VIRIYA GREEN





International Airport

UWC Thailand International School, Phuket

Holy Trinity Church in Phuket

**VIRIYA GREEN**

Lotus Thalang

HomePro Thalang



**VIRIYA GREEN  
MAP LOCATION**

Layan Beach

Anantara

Banyan Tree

Laguna Beach

Movenpick

Xana Beach Club

Bangtao Beach

Cassia Phuket

Villa market Boat Avenue

Porto de Phuket

Catch Beach Club

Amanburi

Surin Beach

Laguna Golf Phuket

Bake Cafe

Gas station

ST. JOSEPH CATHOLIC CHURCH

Police station

Gas station

Blue Tree Phuket

Robinson Lifestyle

Monument of Thao Thep Kasattri and Thao Si Sunthon





Thanyapura Internation school 3.5 km



Airport 15 km



Thalang hospital 3.3 km



Robinson Thalang 9.5 km



Homepro Thalang 5.10 km



Tesco lotus Thalang 3.5 km



Makro Thalang 4.3 km



Layan beach 9.7 km





LINE



IG



WWW

## CONTACT

Viriya Property and Development Co.,Ltd.

196/80 Moo.4 Baandon Village, Thepkasattri Sub-district, Thalang District Phuket 83110

E-mail : [info@viriyaproperty.com](mailto:info@viriyaproperty.com) / Web : [www.viriyaproperty.com](http://www.viriyaproperty.com)

Face book : Viriya Property&Development

Tel: TH +66 (0) 95 791 7124 , EN +66 (0) 80 536 1996